



# Fall 2020 Quarterly Newsletter

Published November 2020

## Virtual 2020 CHAMPS Awards Ceremony and Annual CHAMPS Board of Directors Meeting

Each year, CHAMPS presents awards to staff and board members of Region VIII Health Centers and related organizations to recognize exceptional contributions to the health center community. Over the years, this process has allowed CHAMPS to honor numerous highly deserving individuals from across the region for their outstanding advocacy, leadership, and dedication to the health center mission.

The virtual **2020 CHAMPS Awards Ceremony** will take place on Friday, November 20 from 1:00-1:45PM MT / 2:00-2:45PM CT, and attendees will learn more about:

- ★ A board member who gives selflessly to help her organization thrive.
- ★ A chief executive officer who has dedicated his career to the Community Health Center Movement.
- ★ A chief medical officer who opened a health center in her hometown to serve those in need.
- ★ A senior director of operations who transformed her organization's services and workflows.
- ★ A state Medicaid director who has been invaluable in helping health centers overcome barriers to providing high-quality care.
- ★ An associate medical director who has paved the way for his and other health centers.
- ★ An infection prevention/control manager who has kept patients and staff safe throughout the COVID-19 pandemic.

The virtual annual **CHAMPS Board of Directors Meeting** will take place following the Awards Ceremony from 2:00-4:00PM MT / 3:00-5:00PM CT on Friday, November 20. CHAMPS board members will be joined by Jim Macrae from the Bureau of Primary Health Care (BPHC) and Rachel Gonzales-Hanson from the National Association of Community Health Centers (NACHC). If you are a Board member and unable to attend, please arrange for proxy representation.

*Have questions about the 2020 Awards Ceremony?*

*Contact the CHAMPS [Workforce Development and Member Services Director](#).*

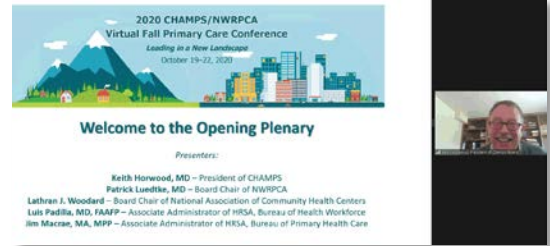
*Have questions about the Board of Directors Meeting? Contact the CHAMPS [Executive Director](#).*

### Inside this Issue

- [CHAMPS News](#) (pg. 2-3): CHAMPS/NWRPCA Virtual Fall Primary Care Conference Highlights, Meet the New CHAMPS Coordinators, Region VIII UDS Summary and Highlights Flyer, CHAMPS 35th Anniversary
- [Workforce News](#) (pg. 4-6): HP-ET Initiative & RTAT, CHAMPS 2020 Salary Survey, CHAMPS Job Opportunities Bank, NHSC COVID-19 Support, Continuing Education on Your Schedule, Retaining Health Center Staff, Fall Updates from the STAR<sup>2</sup> Center, What is NIMAA?, Our Future Healthcare Workforce: HOSA
- [MPCN News](#) (pg. 7): Region VIII Oral Health Peer Learning Network, 2020 Million Hearts® Hypertension Control Champions, CHAMPS Resiliency Collaborative, MPCN Minute, Offsetting Patient Costs
- [Health Equity News](#) (pg. 8-9): Open Enrollment, Sign up for Health Equity Digest, Health Equity Learning Series Archives Available, Achieving a Cohesive Culture for Health Equity in Latino and All Communities, Adopting the National Standards for CLAS, HITEQ Social Determinants of Health Data Webinar and Telehealth Resources for Special Populations
- [COVID-19 News](#) (pg. 10-11): CHAMPS COVID-19 Resources, Weekly HRSA COVID-19 Survey, ACS Guidance on Cancer Screening During COVID-19, COVID-19 and Behavioral Health
- [Regional & National News](#) (pg. 11-13): Health Center Funding Update, 340B Update, Needs Assessment Data Resources, HHS Rural Action Plan, Region VIII in the News, National Funding Opportunities
- [Events Calendar & CHAMPS Contacts](#) (pg. 14)

## CHAMPS/NWRPCA Virtual Fall Primary Care Conference Highlights

Last month, over 350 members of the health center community attended the 2020 Virtual Fall Primary Care Conference, jointly hosted by Community Health Association of Mountain/Plains States (CHAMPS) and Northwest Regional Primary Care Association (NWRPCA). The conference theme, "Leading in a New Landscape," reflected the extraordinary times we were all facing and the exceptional and inspiring leadership of Region 18 Community Health Centers, honoring Community Health Centers and their dedicated staff and board members who continue to lead their organizations and communities with compassion and excellence.



*CHAMPS Board of Directors President, Keith Horwood, MD, giving his welcome speech at the Opening Plenary.*

In addition to having 30 educational sessions across six tracks, this year's conference included an opening plenary, two super sessions addressing 340B and the 2020 election, seven roundtables for networking and peer learning, sponsor lunch and learns, and a virtual exhibit hall. Plenary speakers included Lathran Johnson Woodard, Chair of the National Association of Community Health Centers (NACHC), and Dr. Luis Padilla and Jim Macrae from the Health Resources and Services Administration (HRSA).



*Helen, Julie, Andrea, Jen, and Missy from CHAMPS, ready for conference week.*

CHAMPS would like to congratulate the Region VIII Raffle Winner, Vicki Sulser from RiverStone Health in Montana. Vicki won a complimentary registration to next year's Fall Primary Care Conference which is scheduled to be held October 23-26, 2021 in Seattle, WA.

*To review 2020 conference highlights, learn more about reimbursement opportunities for CHAMPS Organizational Members and Continuing Education Unit (CEU) certificates, and stay updated on plans for the 2021 conference, visit the CHAMPS [Annual Primary Care Conference](#) webpage. To access recordings and resources from the 2020 conference, visit the NWRPCA [Learning Vault](#).*

## Meet the New CHAMPS Coordinators

CHAMPS is pleased to welcome new [staff members](#) **Missy Durfey, MPH** and **Eleanor Franks**.



Missy joined the CHAMPS team as the Programs Coordinator, COVID-19 Response in August. Her focus is coordinating and implementing CHAMPS COVID-19 response programs and providing support to Region VIII health centers on emergency preparedness and public health. Missy brings several years' experience providing support to healthcare clinics in Colorado regarding environmental health and safety (EH&S) and emergency preparedness. To contact Missy, please email [Missy@CHAMPSonline.org](mailto:Missy@CHAMPSonline.org).

Eleanor joined the CHAMPS team as the Programs Coordinator, Health Professions Education in September. She is responsible for coordinating CHAMPS' health professions education and training (HP-ET) programs to better support a strong and sustainable health center workforce. Prior to joining CHAMPS, Eleanor served as a Peace Corps Education Volunteer in Guinea, West Africa and as an International Development Intern for an after-school education program in South Africa. To contact Eleanor, please email [Eleanor@CHAMPSonline.org](mailto:Eleanor@CHAMPSonline.org).



## 2019 Region VIII UDS Information

Each year CHAMPS compiles a summary of Region VIII Bureau of Primary Health Care (BPHC) Uniform Data System (UDS) information, focusing on data relating to grantees, sites, staffing, visits, income, and patients, as well as trends for medical, dental, and mental/behavioral health productivity, factors impacting financial trends, and performance for 13 clinical measures. The full 2019 Region VIII UDS Summary will be released soon. Immediately available Region VIII UDS resources include:

- ★ A two-page [2019 Region VIII UDS Fact Sheet](#).
- ★ A two-page [2019 UDS Workforce Metrics Infographic](#).

Visit the [CHAMPS Publications](#) webpage to review Region VIII UDS summaries from prior years.

### 2019 UDS Highlights for Region VIII Health Center Awardees:

- ★ 57% were considered rural in 2019.
- ★ Almost 1.1 million patients were served.
- ★ Almost 90% of these patients received medical services; 23% received dental services, and 12% received mental health services.
- ★ The Substance Use Disorder (SUD) cost per SUD patient dropped from \$599 in 2018 to \$439 in 2019.
- ★ 75% of Region VIII Health Center Awardees provided health professions education/training programs in 2019.

## CHAMPS 35th Anniversary

CHAMPS is celebrating our 35th Anniversary throughout 2020! Explore the [Celebrating 35 Years of Service to Region VIII](#) webpage to learn more about CHAMPS history, leadership, and membership. In honor of CHAMPS 35<sup>th</sup> Anniversary, CHAMPS Board Members, CHAMPS Organizational Members, and MPCN Steering Committee Members recently received a variety of 35<sup>th</sup> anniversary commemorative items. Additionally, CHAMPS created a [word cloud](#) (pictured below) with words and phrases collected from members, partners, and friends about the value of a regional association and what CHAMPS means to them.



Staff from Northland Health Centers (ND) enjoy a well-deserved break with CHAMPS 35<sup>th</sup> Anniversary flying discs.



**Learn more about CHAMPS:**

- ★ [CHAMPS Highlights Infographic](#)
- ★ [CHAMPS Membership Milestones Flyer](#)
- ★ [CHAMPS Timeline](#)
- ★ [CHAMPS Word Cloud](#)
- ★ [Honoring Our Leaders and Partners](#)
- ★ [Looking to the Future](#)
- ★ [MPCN 30th Anniversary E-Card](#)



## WORKFORCE DEVELOPMENT NEWS

*Encouraging successful careers and strong, cutting-edge organizations by providing live and archived continuing education, recruitment and retention tools, and the latest information on current trends and statistics. [Learn more here.](#)*

### Health Professions Education and Training Initiative: The Readiness to Train Assessment Tool (RTAT)



The Health Resources and Services Administration (HRSA) recently launched the [Health Professions Education and Training \(HP-ET\) Initiative](#) to enhance the ability of health centers to recruit, develop, and retain their workforce by exposing health and allied health professions students, trainees, and residents to education and training programs conducted at health centers. The HP-ET Initiative, which complements and builds on the CHAMPS/Northwest Regional Primary Care Association (NWRPCA) [Education Health Center Guide](#), uses the Readiness to Train Assessment Tool (RTAT) to help health centers assess and improve their readiness to engage in these programs. Primary Care Associations (PCAs) across the country will be utilizing the results of this assessment to target related training and technical assistance needs.

All health centers should invite staff members from multiple disciplines to participate in this 15-25 minute assessment. As of November 4, at least 43% of health centers in Region VIII have submitted one or more responses.

*To access the survey link, please contact your [State PCA](#).  
For more information, provided by the developers of the assessment, visit the [Community Health Center Inc. Readiness to Train Assessment Tool](#) webpage.*

### CHAMPS 2020 Salary Survey Project

CHAMPS is in the process of analyzing salary and benefits data for over 8,000 health center employees submitted by 47 Region VIII health centers as part of the 2020 [Region VIII Health Center Salary, Benefits, Turnover, and Vacancy Survey](#). The resulting reports will provide valuable details about salaries and benefits paid to all health center employees, information about health center benefits packages, recruitment and retention metrics, staffing ratios, productivity expectations, and more.



*Each [CHAMPS Organizational Member](#) and any health center that submitted data for the project will receive free copies of the resulting reports once they become available.*

### CHAMPS Job Opportunities Bank

Is your Region VIII health center or Primary Care Association (PCA) hiring? Post your open positions on the CHAMPS [Job Opportunities Bank](#) (JOB). JOB is a free resource that can be utilized by any Region VIII (CO, MT, ND, SD, UT, WY) health center or PCA. CHAMPS staff attend job fairs to promote open positions, and send out a monthly email to prospective employees highlighting positions recently posted by CHAMPS [Organizational Members](#).

*If you have an open position you would like added to the CHAMPS Job Opportunities Bank, please contact the CHAMPS [Programs Coordinator, Workforce and Communications](#).  
If you want to sign up for the CHAMPS monthly JOB email, visit the CHAMPS [Job Bank](#) webpage.*

## WORKFORCE DEVELOPMENT NEWS, *Continued*

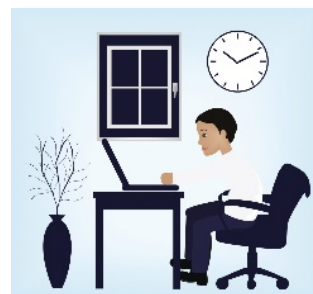
### NHSC COVID-19 Support

The National Health Service Corps (NHSC) and Nurse Corps programs are exploring opportunities to strengthen health services in communities affected by the ongoing COVID-19 pandemic. If your site has an urgent need for skilled healthcare workers who can provide remote or onsite care to assist with COVID-19 response activities, NHSC and Nurse Corps may be able help. They have identified clinicians who can provide COVID-19 support in a full-time or part-time capacity. If your site or healthcare system/network is interested in NHSC or Nurse Corps assistance with primary care or COVID-19 support, please contact [Leah Graves](#) and [Sonalee Asim](#).

*For more information on program flexibilities in support of COVID-19, please visit the [NHSC and Nurse Corps: COVID-19 FAQs](#) webpage.*

### Continuing Education on Your Schedule

CHAMPS' live distance learning events are recorded to give health center staff extra opportunities to enhance professional development, gain clinical knowledge, and learn workforce strategies. Current offerings include:



- ★ **Clinical and Quality Distance Learning Events**
  - [2020 Immunization Update](#)
  - [CHAMPS/WMT AHEC Building Resiliency Skills Learning Community](#)
  - [Pandemic Lessons Learned: New York CHC CMOs Share Their Experiences with Region VIII CHC Providers](#)
  - [CHAMPS/RMPHTC Next Steps for Colorectal Cancer Screening](#)
- ★ **2019 Care Coordination Essentials Series**
  - [Motivational Interviewing for Care Coordinators](#)
  - [Navigating Families in Conflict](#)
  - [Caring for Yourself When You're a Care Coordinator](#)
- ★ **CCHN/CHAMPS 2020 Health Equity Learning Series**
  - [Health Equity is Social Justice: Health Centers in the Context of Racial and Social Justice](#)
  - [Health Equity in the Context of COVID-19](#)
  - [Organizational Commitment and Strategies for Health Equity Communication](#)
  - [Applying the Health Equity Lens: Serving People with Disabilities](#)
- ★ **CHAMPS/CCHN 2019 Outreach & Enrollment Series**
  - [Social Determinants of Health 101 for Community-Facing Staff](#)
  - [Preparing for Open Enrollment 7: Outreach to Specific Populations](#)
  - [Self-Care: Building Resiliency and Burnout Prevention](#)
- ★ **Special and Vulnerable Populations Distance Learning Event**
  - [Understanding and Serving Patients who are Veterans](#)
- ★ **Workforce Distance Learning Event**
  - [Maximize the Impact of Your Recruitment & Retention \(R&R\) Strategies: Understanding and Utilizing Statistics from the CHAMPS 2019 Region VIII Health Center R&R Survey](#)

*To view current offerings, visit the CHAMPS [Online Archived Distance Learning Events](#) webpage.*

#### Retaining Health Center Staff

The CHAMPS [Retaining CHC Staff](#) webpage provides a plethora of resources to help maintain sufficient staffing at your health center. Visit the webpage for resources on recruitment for retention, creating a retention plan, what to do if they leave, and much more.

## Fall Updates from the STAR<sup>2</sup> Center

Submitted by Mariah Blake, STAR<sup>2</sup> Center

The STAR<sup>2</sup> Center team is committed to supporting their workforce colleagues at health centers, Primary Care Associations (PCAs), and Health Center Controlled Networks (HCCNs) with resources, training, and technical assistance on topics related to recruitment and retention. While they look forward to continuing their monthly “train the trainer” [Workforce Professional Development Series for PCA and HCCN teams](#), they are also expanding their library of self-paced resources designed to fit busy schedules. Learn from workforce leaders on-the-go by tuning in to the [STAR<sup>2</sup> Center Chats with Workforce Leaders](#) podcast. Take 30-minutes to complete one of their [self-paced online courses](#) on topics ranging from advertising and sourcing candidates as part of the recruitment process to creating a robust compensation package for retention. The Star<sup>2</sup> Center team will also support workforce teams in developing a comprehensive workforce plan through the customizable [Retention and Recruitment Plan Template](#) and its supporting resources. As always, their team is available to provide individual or team based technical assistance to help you bolster your workforce efforts.

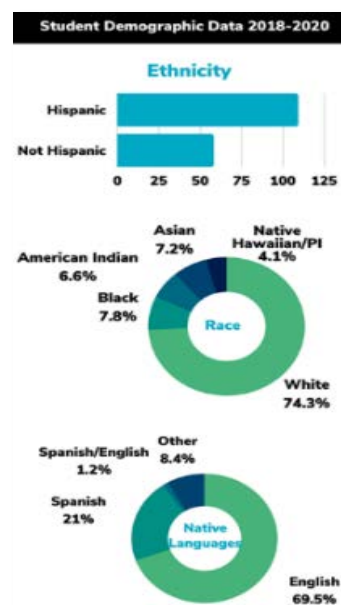
For more information or if you have any questions, [contact the Star<sup>2</sup> Center team](#).

## What is NIMAA?

Submitted by Allie Murray, NIMAA

What compelled Salud Family Health Centers and Community Health Center, Inc. to create the National Institute for Medical Assistant Advancement (NIMAA)? One primary motivator was the desire to provide educational opportunities within their own communities, creating a health care workforce that better reflects their patient population. As a national institute with partners across states, NIMAA also provides students with the opportunity to broaden their cultural and regional understanding. Students are able to interact with a diverse student body, as seen in the infographic to the right, and learn from their peers’ experiences. NIMAA looks forward to continuing to provide people with the opportunity to serve their communities and learn from others as they become high-performing medical assistants.

To learn more, visit the [NIMAA](#) website.



## Our Future Healthcare Workforce: HOSA

Submitted by Amy Hudson, Traci Pole, and Dr. Charles Smith, SAMHSA

HOSA-Future Health Professionals, formerly known as Health Occupations Students of America (HOSA), is an international student organization at the high school and community college level that is focused on promoting career exploration and opportunities in the health care industry and enhancing the delivery of quality health care to all people.



Every Region VIII state except Wyoming has a HOSA Chapter. There are numerous opportunities for health care professionals and primary care agencies to interface directly with students, such as student mentorship, classroom education, sponsoring field placements, and even presenting or serving as a judge at annual statewide HOSA competitions.

To learn more about HOSA Chapters in your state, visit the [HOSA](#) website.

To learn more about the Region VIII HOSA efforts, contact [Traci Pole](#) and [Dr. Charles Smith](#) from the Substance Abuse and Mental Health Services Administration (SAMHSA).

# MOUNTAIN/PLAINS CLINICAL NETWORK (MPCN) NEWS

*Providing professional, administrative, and educational support to all clinicians who practice in Community, Migrant, and Homeless Health Centers in Region VIII to ensure the delivery of the highest possible quality of care to poor and underserved populations. Learn more [here](#).*

## Region VIII Oral Health Peer Learning Network

CHAMPS is pleased to announce a new peer networking opportunity for oral health professionals. In collaboration with the Region VIII State Primary Care Associations (PCAs), CHAMPS hosts a quarterly Zoom video meeting with Region VIII health center oral health professionals including dentists, hygienists, dental operations staff, and others working to support oral health efforts. This meeting provides a place to share best practices, discuss challenges, hear from experts in their field, and identify desired training/technical assistance; meeting topics and direction are determined by session participants with CHAMPS and State PCA support. The next meeting will take place in February 2021. Pre-registration is not necessary to join this learning network.

*Please contact the CHAMPS [Clinical Quality Improvement Director](#) to receive a meeting invitation. For more information, visit the [CHAMPS Oral Health Resources](#) webpage.*

### 2020 Million Hearts® Hypertension Control Champions

This year's 2020 Million Hearts® Hypertension Control Champions achieved blood pressure control in 80% or more of their adult patients with hypertension. Nine health centers were recognized nationally as Champions, including Region VIII health center Clínica Tepeyac in Denver, CO.

Congratulations Clínica Tepeyac on this outstanding achievement!

## CHAMPS Resiliency Collaborative is Back!

The CHAMPS Resiliency Collaborative (RC) is back for a third cohort. The RC is a facilitated peer support group for providers that uses concepts from the evidence-based framework, Finding Meaning in Medicine, in an online format. Each session will incorporate practice of mindfulness techniques and practical awareness exercises as well as group discussion on topics selected by the participants. This cohort will meet for five months at no cost to participants. Sessions will be held on the first and third Wednesdays, January through May 2021. Each session will be held from 12:00-1:00PM MT / 1:00-2:00PM CT. Enrollment is open to medical, behavioral, and oral health providers from health centers in Region VIII.

*For more information or to register, please visit the CHAMPS [Events and Trainings](#) webpage or contact the CHAMPS [Clinical Quality Improvement Director](#).*

## Announcing the New MPCN Minute

CHAMPS recently launched the MPCN Minute, an e-bulletin for the Mountain/Plains Clinical Network (MPCN), a program of CHAMPS. This e-bulletin is replacing the Region VIII Clinicians Listserv to share updates in a more concise format. Recipients will receive the MPCN Minute a couple of times a month with brief updates on upcoming events and quick overviews of useful tools and resources for a clinical and quality improvement audience. If you were receiving the Clinicians Listserv, you are already signed up for the MPCN Minute.

*If you would like to be added to the new MPCN Minute distribution list, please visit the CHAMPS [MPCN Minute](#) webpage or contact the CHAMPS [Clinical Quality Improvement Director](#).*

### Offsetting Patient Costs

The CHAMPS [Offsetting Patient Costs Resources](#) webpage includes a compilation of resources to support Region VIII health centers and their patients in offsetting the costs of preventative care and treatment.

## HEALTH EQUITY NEWS

Assisting Region VIII health centers and Primary Care Associations in pursuing health equity and addressing health disparities by affecting the social determinants of health in their communities. Learn more [here](#).

### Open Enrollment is Here!

Open Enrollment Period Eight (OE8) began on November 1. For Federally Facilitated Marketplaces (FFMs), open enrollment will end December 15; for the State-Based Marketplace in Region VIII (CO), it will end January 15. During this period, some of the most crucial messages to continue to emphasize are:

- ★ **Affordability:** Last year, more than eight in ten marketplace shoppers could get a tax credit to lower the cost of their plan. Additionally, discounts based on income are available to keep health plans affordable. Plans and prices change every year, so it's important to check out the options and see what's available, even if you've looked before, you might find a better deal than you expect.
- ★ **Peace of Mind:** Comprehensive coverage and consumer protections haven't changed. Plans offered at [HealthCare.gov](https://www.healthcare.gov) cover comprehensive benefits like preventive care, check-ups, prescriptions, hospitalizations, mental health care, and more. When shopping for a plan, you cannot be charged more based on your health status. When enrolling in an Affordable Care Act (ACA) plan, you will never be asked about your medical history. The only factors that influence the price of your plan are your geography, age, and whether or not you are a smoker.
- ★ **In-Person Assistance:** Health centers have years of experience in connecting people to affordable health care regardless of income.

Various organizations including Community Catalyst, Kaiser Family Foundation, Out2Enroll, Young Invincibles, and many others have created [new marketing materials and toolkits](#) to support health center outreach and enrollment efforts.

For more information, visit the CHAMPS [Outreach & Enrollment](#) webpage or contact the CHAMPS [Programs Coordinator, Population Health](#).

#### Sign up for the CHAMPS Region VIII Health Equity Digest

The [Health Equity Digest](#) was designed to assist Region VIII health centers and Primary Care Associations (PCAs) in addressing health inequities. The digest focuses on health disparities, obstacles to health, social determinants of health, programs and resources to help close the gaps, and more. Sign up to receive this quarterly resource [here](#).

### CCHN/CHAMPS Health Equity Learning Series Archives Available



The four-part [CCHN/CHAMPS 2020 Health Equity Learning Series](#) was designed to introduce all levels of staff to the Community Health Center Movement's position and continued efforts in the journey towards a more equitable and just health system. Recordings for each session are now available on the CHAMPS [Online Archived CHAMPS Distance Learning Events](#) webpage. Sessions included [Health Equity is Social Justice: Health Centers in the Context of Racial and Social Justice](#), [Health Equity in the Context of COVID-19](#), [Organizational Commitment and Strategies for Health Equity Communication](#), and [Applying the Health Equity Lens: Serving People with Disabilities](#).

### New Resource: Achieving a Cohesive Culture for Health Equity in Latino and All Communities

The Salud America! at University of Texas Health San Antonio research review, [Achieving a Cohesive Culture for Health Equity in Latino and All Communities](#), explores three key mechanisms used to discriminate against Hispanics/Latinos and other people of color: implicit bias, system justification, and moral disengagement. This review offers guidance on how to achieve a cohesive culture focused on health equity through the use of intergroup contact, peer modeling, awareness-provoking interventions, targeted social media, and more.

For more tools, visit the CHAMPS [Health Equity Resources](#) webpage or contact the CHAMPS [Programs Coordinator, Population Health](#).



### Adopting the National Standards for CLAS

*Submitted by Amy Hudson, Traci Pole, and Dr. Charles Smith, SAMHSA*

[The National Culturally and Linguistically Appropriate Services \(CLAS\) Standards in Health and Health Care](#) was developed by the U.S. Department of Health and Human Services (HHS), the Office of Minority Health (OMH), the Substance Abuse and Mental Health Services Administration (SAMHSA), and other federal and community partners. It provides meaningful and practical guidance to deliver culturally and linguistically appropriate services, with a goal to improve quality of care and advance health equity. Additional CLAS resources include:

- ★ [CLAS Toolkit](#)
- ★ [FREE CLAS Standards E-Learning Program](#)
- ★ [National Center for Cultural Competence \(NCCC\)](#)
- ★ [National Network to Eliminate Disparities in Behavioral Health \(NNEED\)](#)
- ★ [SAMHSA Behavioral Health Equity Resources](#)

### HITEQ Social Determinants of Health Data Webinar

*Submitted by Molly Rafferty, HITEQ*

The Health Information Technology, Evaluation, and Quality (HITEQ) Center hosts a monthly webinar series that introduces content and tools to support health centers in full optimization of their Electronic Health Records (EHR) and Health Information Technology (HIT) systems. December's HITEQ Highlight webinar will focus on [Federal Activities and Approaches to Advance Social Determinants of Health Data Use and Interoperability in Support of Community Health Centers](#). Health centers now report on social determinants of health (SDoH) screening activities; for years, however, health centers have focused on the broader health and social needs of the individuals they serve, often making referrals to community-based organizations and utilizing available enabling services. Today, there is growing interest and awareness on the value and use of interoperable SDoH data to support individual, community, and population-level health improvement. Join the HITEQ Highlights webinar on **Wednesday, December 9, 2020 at 1:00PM MT / 2:00PM CT**, where the U.S. Department of Health and Human Services Office of the National Coordinator for HIT will present on the current state of federal activities and standards-based approaches for collecting, sharing, and using SDoH data with a focus on technical and policy considerations. The presentation will describe available standards, tools, and initiatives for health center use and input.



*For more information and to register for the webinar, visit the [HITEQ Resources](#) webpage.*

### HITEQ Telehealth Resources for Special Populations

*Submitted by Molly Rafferty, HITEQ*

The Health Information Technology, Evaluation, and Quality (HITEQ) Center has several resources for improving health centers telehealth and telemedicine programs including resources specific to serving special and vulnerable populations via telehealth. These resources include:

- ★ [Telehealth Considerations and Strategies for Special and Vulnerable Populations](#): This HITEQ Highlights webinar discusses building the awareness, knowledge, and ability of both patients and health center staff to successfully use telehealth to meet the needs of these important groups.
- ★ [Telehealth Strategies and Resources for Serving Patients with Limited English Proficiency](#): This publication includes a multitude of tools for improving access for patients with limited English proficiency.
- ★ [Serving Rural Patients with Telehealth: Resources and Tips for Federally Qualified Health Centers](#): This publication addresses the lack of reliable broadband connection and necessary devices in many rural areas.

*For more telehealth resources, visit the [HITEQ Telehealth and Telemedicine Resources](#) webpage.*

Providing resources, data, and support to Region VIII health centers and Primary Care Associations to assist in the response to the ongoing Coronavirus 2019 (COVID-19) Pandemic. Learn more [here](#).

### CHAMPS COVID-19 Resources

CHAMPS has created a carefully curated clearinghouse of resources for health centers to utilize during and beyond this pandemic. The CHAMPS [Coronavirus Disease 2019 \(COVID-19\) Resources](#) webpage includes a multitude of COVID-19 tool kits, webinars, guidance documents, clinical articles, and more pertinent to all aspects of health center COVID-19 response. CHAMPS staff are working to reformat these resources into seven new webpages that will be released soon.

*If you have any questions about these materials or would like to share additional resources, please contact the [CHAMPS Programs Coordinator, COVID-19 Response](#).*

### Have You Completed Your Weekly HRSA COVID-19 Survey?

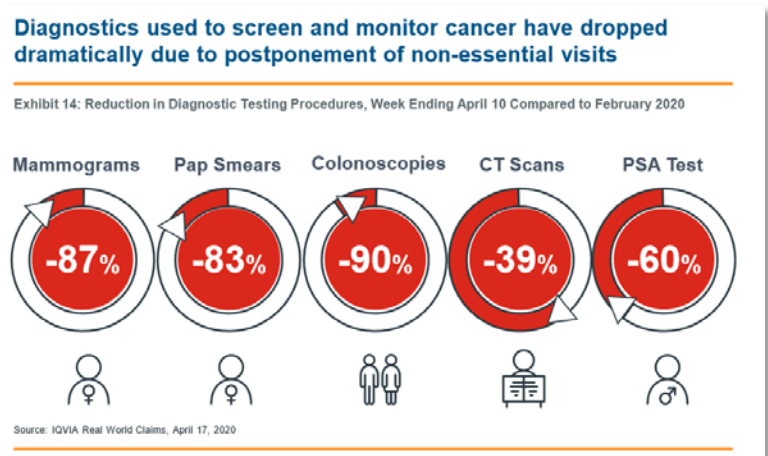
The Health Resources and Services Administration (HRSA) requests that FQHCs and FQHC Look-Alikes complete a weekly survey to help track the number of patients who have undergone COVID-19 testing and other critical information about clinic operations during the pandemic. CHAMPS highly encourages all health centers to complete the survey each week to continue to gather valuable public health data regarding the national COVID-19 response. Find out more about the survey in the “Health Center Program Resources” section of the HRSA [COVID-19 Information for Health Centers and Partners](#) webpage. CHAMPS compiles the Region VIII state results from the survey each week for presentation alongside a national comparison. Survey results help CHAMPS better serve Region VIII health centers, and the findings also influence policy and funding decisions at a national level.

*To review weekly Region VIII results of this survey, visit the CHAMPS [Coronavirus Disease 2019 \(COVID-19\) Resources](#) webpage.*

### ACS Guidance on Cancer Screening During COVID-19

*Submitted by Shannon Bacon, ACS*

Cancer mortality has declined in recent decades in part due to progress in cancer screening technologies, awareness, research, and the general population’s improved uptake in screening services. Yet, far too many individuals for whom screening is recommended remain unscreened, and this situation has been aggravated by the substantial decline in cancer screening resulting from the COVID-19 pandemic. Moreover, the pandemic-related disruptions will likely exacerbate existing disparities in cancer screening and survival across groups of people who have systemically experienced social or economic obstacles to screening and care. In response to these challenges, the American Cancer Society (ACS) developed a [series of guidance documents](#) to summarize the current situation and to provide guidance on how public health agencies, health care providers, and screening advocates across the nation can promote and deliver cancer screening appropriately, safely, and equitably during the COVID-19 pandemic. The reports cover universal screening messages, guidance on breast, cervical, colorectal, and lung cancer screenings, and guidance for HPV vaccination during the pandemic.

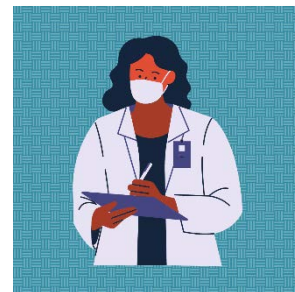


### COVID-19 and Behavioral Health

*Submitted by Amy Hudson, Traci Pole, and Dr. Charles Smith, SAMHSA*

Healthcare providers' health and well-being are critically important, and the Substance Abuse and Mental Health Services Administration (SAMHSA) wants to make sure there are practical and continuous resources to support the physical, mental, and emotional health of providers. SAMHSA has mobilized their Technology Transfer Centers (TTC) to develop and deliver specialized training and resources for healthcare practitioners, first-responders, and others who are on the front lines of the COVID-19 response. Resources include:

- ★ [Healthcare Professionals: Coping with Stress and Compassion Fatigue](#)  
This tip sheet details the signs and symptoms of disaster-related distress and compassion fatigue and offers self-care and stress management tips for responders. It also includes systematic instructions for muscle relaxation and a relaxation breathing technique.
- ★ [Provider Wellbeing During a Public Health Crisis](#)  
This webinar explores the effects of the COVID-19 pandemic on mental health and substance use treatment practitioners. It presents tools to assess distress and wellness, signs of distress and burnout, and strategies to address these conditions.
- ★ [Supportive Practices for Mental Health Professionals During Pandemic-Related Social Distancing](#)  
This tip sheet explains the emotional effects that social distancing can have on mental health and substance use disorder treatment professionals. Tips are for enhancing wellness, balance, and connection for individual practitioners and for supervisors working to support their teams during social distancing.



*For more information, resources, and webinars, visit SAMHSA's [Coronavirus](#) and [TTC Programs](#) webpages.*

---

## REGIONAL & NATIONAL NEWS

### Health Center Funding Update

On Tuesday, September 22, the House of Representatives passed a [Continuing Resolution \(CR\)](#) that will fund the government at its current levels through December 11, 2020. The legislation also included an extension of mandatory funding for the Community Health Center Fund, National Health Service Corps, and Teaching Health Centers at their current levels. While a CR is helpful, health centers need long-term,



stable funding to meet the challenge of the COVID-19 pandemic and to continue to offer quality healthcare across the nation. The [National Association of Community Health Centers \(NACHC\)](#)'s [Health Center Advocacy Network \(HCAdvocacy\)](#) will be hosting two National Days of Action in the coming months to lift up health centers and remind Congress why they must ensure the survival and stabilization of these invaluable, locally-owned and operated community assets. Join them on **November 18** and **December 16**. Click [here](#) to learn more and access advocacy tools.

*For more tools, visit the CHAMPS [Voter Registration and Ballot Measure Advocacy Resources](#) webpage, or contact the CHAMPS [Programs Coordinator, Population Health](#).*

## REGIONAL & NATIONAL NEWS, *Continued*

### 340B Program Update

The [National Association of Community Health Centers \(NACHC\)](#) has filed suit to take action in response to recent moves by drug manufacturers to dismantle the health center federal 340B drug discount program. The suit seeks to compel the U.S. Department of Health and Human Services (HHS) to implement a long-delayed dispute resolution process that would allow health centers to act against drug companies that are violating the 340B statute and have abruptly stopped shipping discounted drugs to health centers' contracted pharmacies.

The 340B program is critical for health centers' ability to make medications affordable for patients, and to generate savings that are used to expand access to other services. Previously, most health centers were unable to afford to provide their patients with access to discounted drugs. NACHC estimates that 10 million low-income patients will suffer reduced access to health center services and affordable medicine unless HHS acts now to protect the program. Bipartisan Members of Congress have urged HHS Secretary [Alex Azar in a letter](#) to take "immediate action" because drug manufacturers are setting "a dangerous precedent."



*For more information, visit the HC Advocacy Network [340B Advocacy](#) webpage, or contact the CHAMPS [Programs Coordinator, Population Health](#).*

#### Resources for Conducting Needs Assessments

According to the [Health Center Program Compliance Manual](#), Health Center Program Awardees and Look-Alikes must demonstrate and document the needs of their target population, including updating their service area when appropriate. The CHAMPS selection of [Needs Assessment Data Resources](#) provides helpful information and links addressing the collection of needs assessment data.

### HHS Rural Action Plan



On September 3, 2020, the U.S. Department of Health and Human Services (HHS) released the [Rural Action Plan](#) in response to an executive order requesting that HHS produce a report on existing and upcoming efforts to improve rural healthcare. The Rural Action Plan, created by the HHS Rural Task Force, aims to enhance health and human services for the 57 million Americans living in rural communities across the country. The plan addresses health disparities, chronic disease burden, high maternal mortality rates, and lack of access to mental health services, and is based around the following four-point strategy to transform rural health and human services:

- ★ **Build a Sustainable Health and Human Services Model for Rural Communities** by empowering rural providers to transform service delivery on a broad scale.
- ★ **Leverage Technology and Innovation** to deliver quality care and services to rural communities more efficiently and cost-effectively.
- ★ **Focus on Preventing Disease and Mortality** by developing rural-specific efforts to improve health outcomes.
- ★ **Increase Rural Access to Care** by eliminating regulatory burdens that limit the availability of needed clinical professionals.

*For more information about rural health and current funding opportunities, visit HRSA's [Federal Office of Rural Health Policy](#) webpage.*

## REGIONAL & NATIONAL NEWS, *Continued*

### Region VIII in the News

- ★ Salud Family Health Centers: [Health Care: Three new providers at Salud Family Health Center in Fort Morgan](#) (*Fort Morgan Times*, October 1)
- ★ RiverStone Health: [RiverStone Health Announces New Location for Free COVID-19 Testing](#) (*KULR8*, October 7)
- ★ Axis Health System: [Reproductive Health Care Shifts to Axis](#) (*The Durango Herald*, October 12)
- ★ Alluvion Health: [Alluvion Health Highlights the Increasing Use of Telemedicine](#) (*KRTV Great Falls*, October 13)
- ★ Educational Health Center of Wyoming: [UW College of Health Sciences Educators Honored as Wyoming Women of Influence](#) (*UW News*, October 13)
- ★ Partnership Health Center: [\\$125K State Grant to Help Fund Mobile Crisis Unit; Missoula Fire Wins Contract](#) (*Missoula Current*, October 13)
- ★ Salud Family Health Centers: [Estes Park Salud Family Health Centers Welcomes New Dentist: Nathan Bortolini, DDS](#) (*Estes Park Trail Gazette*, October 13)
- ★ Flathead Community Health Center: [Flathead County Flu Clinic Helps Simulate Rollout of COVID Vaccine](#) (*Flathead Beacon*, October 14)
- ★ Valley-Wide Health Systems: [Rural Training Track Residents Join Valley-Wide Health Systems](#) (*Valley Courier*, October 16)
- ★ Alluvion Health: [Alluvion Expands Dental Service with Its First-Ever Mobile Dental Unit](#) (*KHO*, October 17)
- ★ Spectra Health: [Spectra Health Moves Forward with Nod to Past Ties](#) (*Grand Forks Herald*, October 18)
- ★ Association for Utah Community Health: [Utah's Community Health Centers Provide Safe, Affordable Flu Vaccines](#) (*St. George News*, October 19)
- ★ Horizon Health Care: [Rural Midwest Hospitals, Including in SD, Struggling to Handle Virus Surge](#) (*Argus Leader*, October 19)
- ★ Axis Health System: [Durango Police Move Toward Reforming Mental Health Response](#) (*The Durango Herald*, October 20)
- ★ Community Health Partners and Montana Migrant and Seasonal Farm Workers Council: [Promoting Health — and Trust](#) (*Montana Free Press*, October 26)
- ★ Wyoming Primary Care Association: [State Assists Residents with Insurance](#) (*Cody Enterprise*, October 26)
- ★ RiverStone Health: [White House COVID-19 Coordinator Visits Billings](#) (*Billings Gazette*, October 27)
- ★ Valley-Wide Health Systems: [Rocky and Las Animas Clinics Temporarily Move to Telehealth](#) (*La Junta Tribune-Democrat*, October 29)
- ★ Peak Vista Community Health Centers: [Health Care Workers Cope with Stress, Burnout](#) (*The Colorado Springs Business Journal*, October 30)
- ★ Montana Primary Care Association and RiverStone Health: [Felton Earns Dr. Alan Strange Legacy Award](#) (*Billings Gazette*, November 1)
- ★ Clinica Family Health and Summit Community Care Clinic: [Demand for Services Up at Dental Clinics](#) (*Public News Service*, November 2)
- ★ STRIDE Community Health Center: [Nonprofit STRIDE Works to Keep Up with Increased Demand for Coronavirus Testing](#) (*CBS Denver*, November 4)

#### National Funding Opportunities

- ★ HRSA [Rural Health Care Services Outreach Program](#) (December 1)
- ★ HRSA [Supplemental Funding for Hypertension](#) (December 3)
- ★ HRSA [Rural Health Clinic Technical Assistance Program](#) (December 21)
- ★ HRSA [Behavioral Health Workforce Education and Training Program for Professionals](#) (January 21)
- ★ HRSA [National Telehealth Resource Center Program](#) (January 21)
- ★ HRSA [Regional Telehealth Resource Center Program](#) (January 21)

# UPCOMING EVENTS

## November

### [MPCA UDS Training](#)

November 18, 2020  
8:00AM-12:00PM MT / 9:00AM-1:00PM CT

### [NACHC Finance Office Hours: Fiscal Cliff, Provider Relief Funds and Cares Act Update](#)

November 18, 2020  
12:00-1:00PM MT / 1:00-2:00PM CT

### [AUCH UDS Training](#)

November 19, 2020  
10:00-11:30AM MT / 11:00AM-12:30PM CT

### [CHAD UDS Training](#)

November 19, 2020  
12:00-3:00PM MT / 1:00-4:00PM CT

### [HRSA Hypertension Supplemental Funding Q&A](#)

November 19, 2020  
12:00-1:00PM MT / 1:00-2:00PM CT

### [MHP Salud COVID-19 and CHWs Virtual Technical Assistance](#)

November 19, 2020  
1:00-2:00PM MT / 2:00-3:00PM CT

### [2020 CHAMPS Awards Ceremony](#)

November 20, 2020  
1:00-1:45PM MT / 2:00-2:45PM CT

### [CHAMPS Board of Directors Meeting](#)

November 20, 2020  
2:00-4:00PM MT / 3:00-5:00PM CT

### [HRSA UDS Mapper Advanced Topics: Using the UDS Mapper for Rural Areas](#)

November 23, 2020  
10:00-11:00AM MT / 11:00AM-12:00PM CT

## December

### [Today with Macrae: Health Center Program Updates](#)

December 1, 2020  
12:00-1:00PM MT / 1:00-2:00PM CT

### [HRSA Introduction to the UDS Mapper](#)

December 7, 2020  
10:00-11:00AM MT / 11:00AM-12:00PM CT

### [CCHN Triannual](#)

December 10, 2020

### [HRSA UDS Mapper Advanced Topics: Geographic and Data Concepts Important for Population Health](#)

December 16, 2020  
12:00-1:00PM MT / 1:00-2:00PM CT

### [NACHC Finance Office Hours: Strategies to Manage Operations During COVID-19](#)

December 16, 2020  
12:00-1:00PM MT / 1:00-2:00PM CT

## Looking Forward

### [NACHC Policy & Issues Forum](#)

March 15-18, 2021

### [NCFH 2021 Virtual Forum for Migrant and Community Health](#)

March 22-26, 2021

### [NACHC Conference for Agricultural Worker Health](#)

May 4-6, 2021

Stay up to date with all the latest news and CHAMPS offerings and resources through the CHAMPS [LinkedIn Company Page!](#)



### **Newsletter Contributors:**

Jen Anderson, Shannon Bacon, Mariah Blake, Missy Durfey, Eleanor Franks, Amy Hudson, Julie Hulstein, Ashley Hussein, Andrea Martin, Alli Murray, Traci Pole, Molly Rafferty, Dr. Charles Smith, and Helen Rhea Vernier.

Please contact [Ashley@CHAMPSonline.org](mailto:Ashley@CHAMPSonline.org) with questions or comments, to sign up to receive the newsletter, to change your subscription email address, or to submit articles for publication.

*This publication was supported by the Health Resources and Services Administration (HRSA) of the U.S. Department of Health and Human Services (HHS) as part of an award totaling \$719,941 with 20% financed with non-governmental sources. The contents are those of the author(s) and do not necessarily represent the official views of, nor an endorsement, by HRSA, HHS, or the U.S. Government. For more information, please visit [HRSA.gov](http://HRSA.gov).*